

# What You Need to Know About SPICE and K2

## (Synthetic Cannabinoids): A Quick Guide for Parents, Educators, and Community Partners



## SPICE and K2: What You Need to Know

### What Are They?

SPICE, K2, and similar products are synthetic cannabinoids—lab-made chemicals designed to mimic THC, the active ingredient in marijuana. These chemicals are sprayed onto dried plant material or added to vape liquids and sold in small foil or plastic packets. They are often labeled “herbal incense” or “not for human consumption” to avoid regulation, but they are intended for smoking or vaping.

### Street Names

Spice, K2, Black Mamba, Genie, Zohai, Bliss, Pep Spice, Yucatan Fire, Mr. Nice Guy, Dream, Smoke, Serenity, Skooby Snax, Crazy Clown

### Looks Like...

These substances are typically sold in small, colorful bags containing shredded plant material that may resemble potpourri or oregano. They are often available at gas stations, smoke shops, or online and are commonly marketed under misleading labels that hide their intended use. Because ingredients are rarely listed, there is no way to know what chemicals are present or how potent the product may be.



## Effects Of The Drug

### Psychological Effects

Synthetic cannabinoids can cause a range of serious psychological symptoms, which may occur suddenly and without warning. *These include:*

- ☐ Paranoia
- ☐ Hallucinations
- ☐ Confusion or psychosis
- ☐ Panic attacks
- ☐ Aggressive or unpredictable behavior

### Physiological Effects

Physical effects can be severe and are often much stronger than those caused by natural cannabis. *These include:*

- ☐ Rapid heart rate and high blood pressure
- ☐ Vomiting or nausea
- ☐ Seizures or tremors
- ☐ Kidney damage or organ failure
- ☐ Risk of stroke, coma, or death

## Methods Of Abuse

Synthetic cannabinoids are usually smoked in joints, pipes, or glass pieces, or inhaled using vape devices. Some users may brew the dried plant material into a tea or ingest it in other ways. Use is often motivated by a desire to avoid detection on drug tests.

## Symptoms Of Overdose

Synthetic cannabinoids can cause severe and unpredictable physical and mental health effects that resemble overdose. Symptoms may include extreme agitation, seizures, vomiting, loss of consciousness, and in some cases, death. Because the contents of these products are unknown and unregulated, responses may vary widely between individuals and even between uses. Naloxone (Narcan) does not reverse the effects of synthetic cannabinoids, but it is safe to administer if opioids may be involved. **Always call 911 in any suspected overdose.**

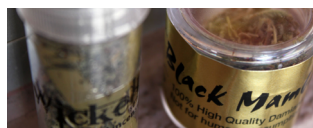
## Legal Information

Synthetic cannabinoids like SPICE and K2 are often made with lab-designed chemicals intended to mimic THC. Many of these substances are now classified by the U.S. Drug Enforcement Administration (DEA) as Schedule I controlled substances, meaning they are considered illegal to manufacture, distribute, or possess under federal law. Schedule I drugs are defined as having no currently accepted medical use and a high potential for abuse.

Because manufacturers frequently alter the chemical formulas to avoid regulation, enforcement remains a challenge, and the legal status of specific products can change quickly. Products are often misleadingly labeled as “herbal incense” or “not for human consumption” to evade detection.

For current legal and safety information, visit:

[www.dea.gov/factsheets/spice-k2-synthetic-marijuana](http://www.dea.gov/factsheets/spice-k2-synthetic-marijuana)



## Resources

### National & Local

Information and images obtained from the United States Drug Enforcement Agency

[www.dea.gov](http://www.dea.gov)

[www.nida.nih.gov](http://www.nida.nih.gov)

### Crisis Support

#### 988 Suicide & Crisis Lifeline

Call or text 988 for 24/7, free, and confidential support for mental health, substance use, or suicidal crises.

#### SAMHSA National Helpline

Call 1-800-662-HELP (4357) for free, confidential treatment referrals and information, available 24/7.

### Additional Information

Nevada High School Youth Risk Behavior Survey (YRBS) Report

<https://scholarwolf.unr.edu>

### Nevada Resources

#### Nevada Opioid Center of Excellence

[www.nvopioidcoe.org](http://www.nvopioidcoe.org)

Email: [noce@casat.org](mailto:noce@casat.org)

#### CASAT OnDemand

[www.casatondemand.org](http://www.casatondemand.org)

Email: [ondemand@casat.org](mailto:ondemand@casat.org)